

MONTHLY MEMBERSHIP PROGRESS REPORT

LOCATION ONTARIO

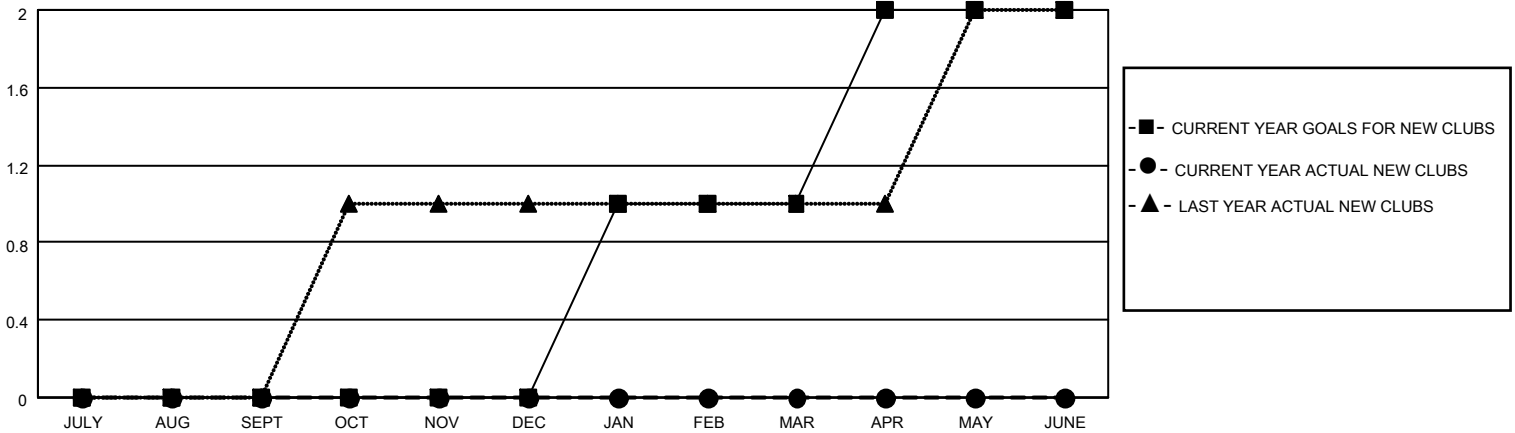
District A 1

Results as of: 1/31/2022

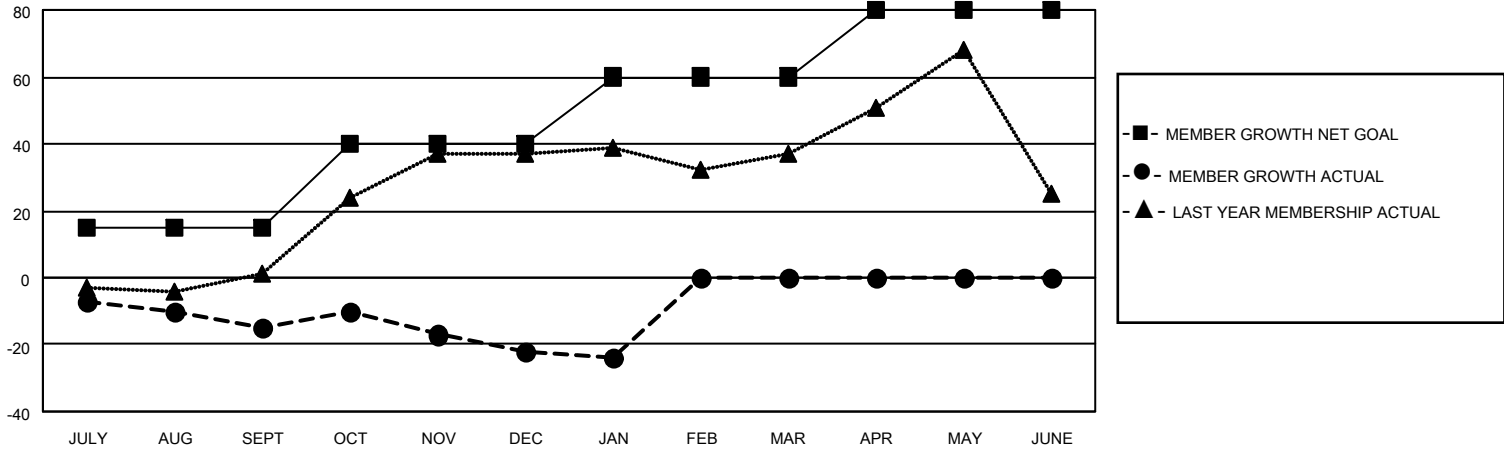
| Clubs | | | |
|-----------------------|---------------|-----------|---------------|
| RESULTS FOR 2021-2022 | | | |
| QUARTER | NEW CLUB GOAL | NEW CLUBS | DROPPED CLUBS |
| JULY/AUG/SEPT | 0 | 0 | 0 |
| OCT/NOV/DEC | 0 | 0 | 0 |
| JAN/FEB/MAR | 1 | 0 | 0 |
| APR/MAY/JUNE | 1 | 0 | 0 |

| Members | | | |
|-----------------------|------------------------|----------------------|---|
| RESULTS FOR 2021-2022 | | | |
| QUARTER | MEMBER GROWTH NET GOAL | MEMBER GROWTH ACTUAL | DROPPED MEMBERS ACTUAL (including transfers) |
| JULY/AUG/SEPT | 15 | 8 | 22 |
| OCT/NOV/DEC | 25 | 31 | 36 |
| JAN/FEB/MAR | 20 | 1 | 2 |
| APR/MAY/JUNE | 20 | 0 | 0 |

GOALS AND ACTUAL NEW CLUBS CUMULATIVE



GOALS AND ACTUAL MEMBERS CUMULATIVE



| | | |
|---|---|--|
| DROPPED CLUBS: 0 | 13 CLUBS OF 41 ADDED 1 OR MORE NEW MEMBERS | <p style="text-align: center;"><u>GENDER DISTRIBUTION</u></p> MALE 856 (73.73%) FEMALE 305 (26.27%) NON BINARY 0 (0.00%) PREFER NOT TO ANSWER 0 (0.00%) |
| <p style="text-align: center;"><u>DROPPED MEMBERS</u></p> DECEASED 13 CLUB CANCELLED 0 OTHER 47 <hr/> TOTAL 60 | CLICK HERE FOR CUMULATIVE MEMBERSHIP DATA | TOTAL FAMILY UNIT MEMBERS 187 FAMILY MEMBERS PAYING HALF DUES 94 |